



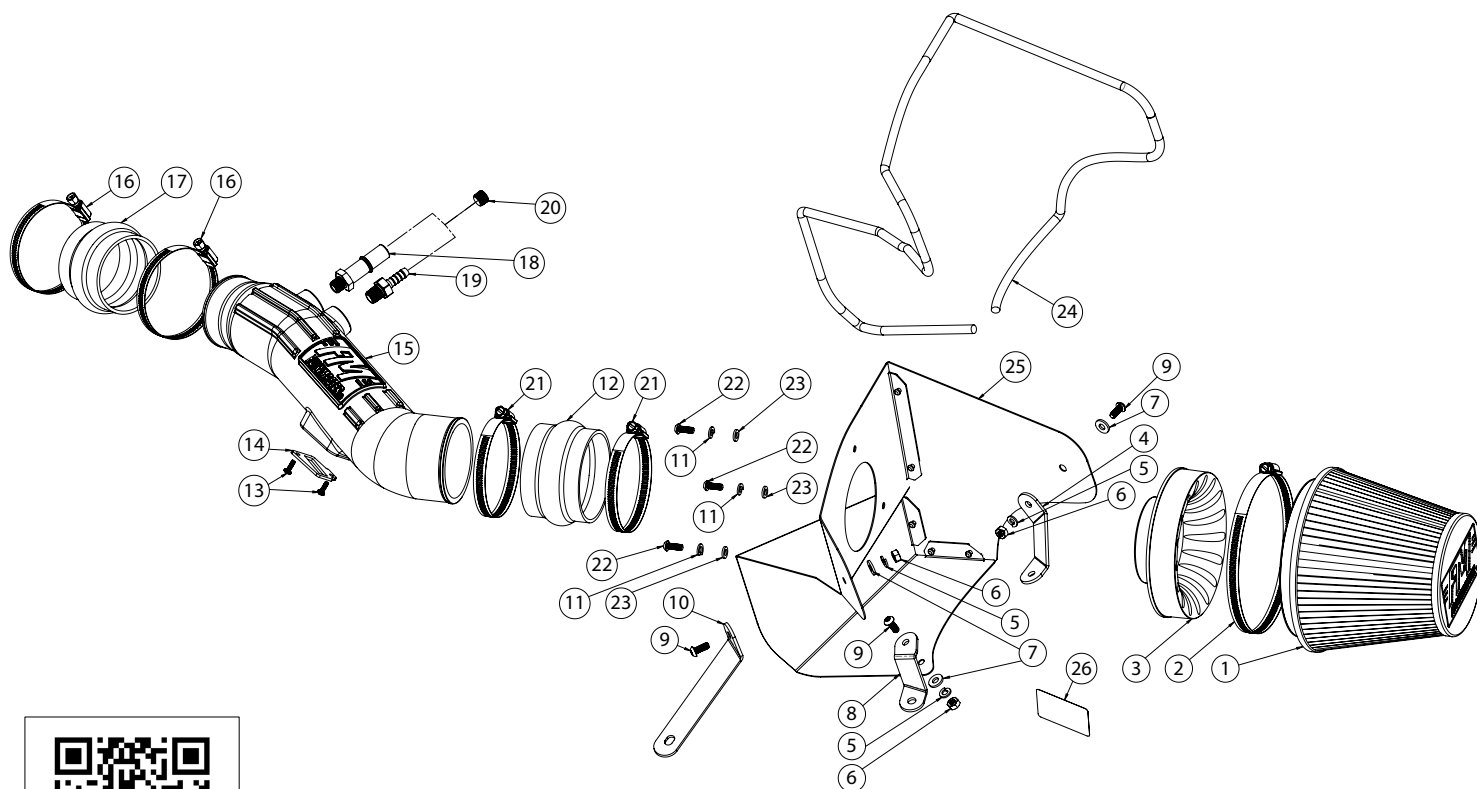
Installation Instructions

615146

2011-14 FORD MUSTANG

3.7L ENGINE

THIS INTAKE SYSTEM IS 50-STATE LEGAL FOR THE VEHICLES LISTED ABOVE PER CARB EXECUTIVE ORDER D-698-5. SEE WWW.FLOWMASTERMUFFLERS.COM FOR CARB STATUS OF INTAKE SYSTEMS FOR OTHER VEHICLES.



Watch our
installation video
on YouTube

NOTE: ITEM 20 (1/4" NPT PLUG) IS AN OPTION THAT MAY BE USED IN PLACE OF EITHER FITTING 18 OR 19, DEPENDING ON YOUR VEHICLE'S CONFIGURATION. SEE INSTRUCTIONS FOR FURTHER DETAILS.

Rev. 6/23/2020

ITEM NO.	PART NUMBER	DESCRIPTION	QTY.
1	AF1003	FILTER, AIR 6.625" HIGH, Ø 6" FLANGE	1
2		#104 HOSE CLAMP Ø 4.125 TO 7"	1
3	AF6001	3.5" AIR FILTER ADAPTER	1
4	AF5026	11 GA X 1" BRACKET #1	1
5	HW322	1/4" SPLIT LOCK WASHER SS	3
6	HW115	1/4"-20 NUT SS	3
7	HW320	1/4" FLAT WASHER SAE SS	3
8	AF5028	11 GA X 1" BRACKET #3	1
9	HW245	1/4"-20 X 5/8" BTNHD SS	3
10	AF5027	11 GA X 1" BRACKET #2	1
11	HW318	M6 SPLIT LOCK WASHER SS	3
12	AF4019	3.5"ID X 2.5"L RUBBER COUPLER, HUMP	1
13	HW248	M4 X 0.7 X 12MM RH PHILLIPS SCREW SS	2

ITEM NO.	PART NUMBER	DESCRIPTION	QTY.
14	GA139	MAF SENSOR GASKET	1
15	AF2020	MOLDED INTAKE TUBE	1
16	MC314H	#52 HOSE CLAMP Ø 2 13/16 TO 3 3/4"	2
17	AF4036	3.0"ID X 2.5"L RUBBER COUPLER, HUMP	1
18	AF4016	5/8" QUICK CONNECT TO 1/4" NPT MALE, STRAIGHT	1
19	AF4040	3/8" BARB TO 1/4" NPT MALE STRAIGHT	1
20	AF4033	1/4" NPT ALUM. PLUG	1
21	MC350H	#56 HOSE CLAMP Ø 3 1/16 TO 4"	2
22	HW244	M6 X 1.0 X 16MM BTNHD SS	3
23	HW319	M6 FLAT WASHER SS	3
24	49000061	HEAT SHIELD GASKET	1
25	AF3015	HEAT SHIELD	1
26	LB698-5	CARB EO LABEL, DELTA FORCE, D-698-5	1

REVIEW THE INSTRUCTIONS AND VERIFY KIT CONTENTS:

1. Please take a moment to read and understand these instructions before installing your FLOWMASTER cold air intake kit.



2. Use the parts drawing and list (front page) to verify your kit's contents.

In the unlikely event that any parts are missing, please contact FLOWMASTER Technical Support for replacements.

To simplify assembly and avoid cross-threading fasteners, identify and separate the 1/4-20 screws, item (9) (used with nuts (6)), and the M6 screws (22) (used with filter adapter (3)).

REMOVE FACTORY AIR INTAKE SYSTEM:

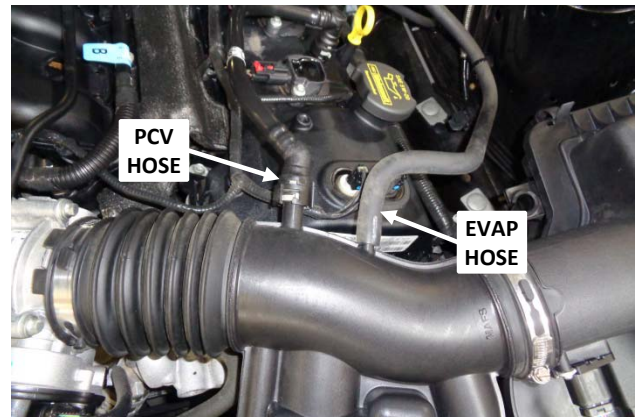
NOTES

- We highly recommend that you retain all factory air intake system parts.
- Please refer to vehicle manufacturer's recommendations regarding removal of factory components.
- Disconnecting the negative battery cable erases pre-programmed electronic memories. Write down all memory settings before disconnecting the negative battery cable. Some radios will require an anti-theft code to be entered after the battery is reconnected. The anti-theft code is typically supplied with your owner's manual. In the event your vehicle's anti-theft code cannot be recovered, contact an authorized dealership to obtain it.

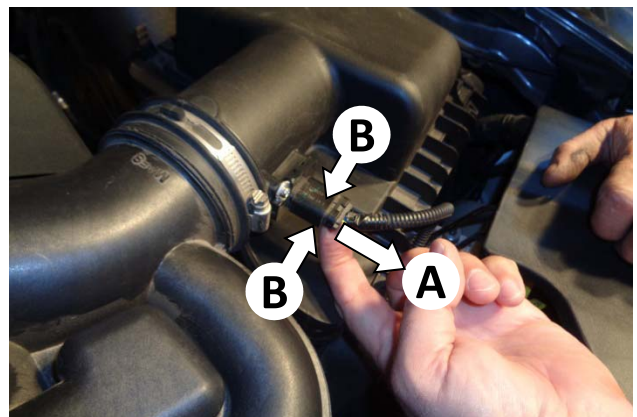
3. Turn off the vehicle's ignition and disconnect the negative battery cable.



4. If your vehicle includes the optional engine cover, provide working clearance around the cover by removing the oil fill cap and fill cap extension, then temporarily reinstalling the fill cap.



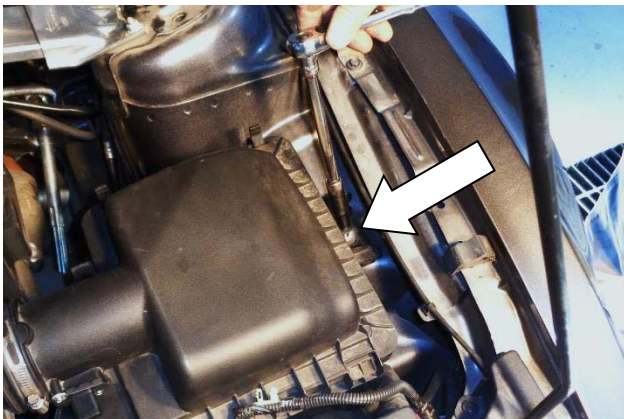
5. Remove the PCV and / or EVAP vacuum hose(s) from the intake duct. (Your vehicle may have either / both hoses.) NOTE: Release the PCV fitting by lifting the latch up and to the left.



6. Disconnect the mass airflow (MAF) sensor plug by (A) pulling the locking tab away from the sensor until it stops, then (B) squeezing the flat sides of the plug and pulling it straight off the sensor.



7. Use a flat-tip screwdriver to release the clip securing the MAF lead to the airbox.



8. Remove and retain the airbox mount bolt.



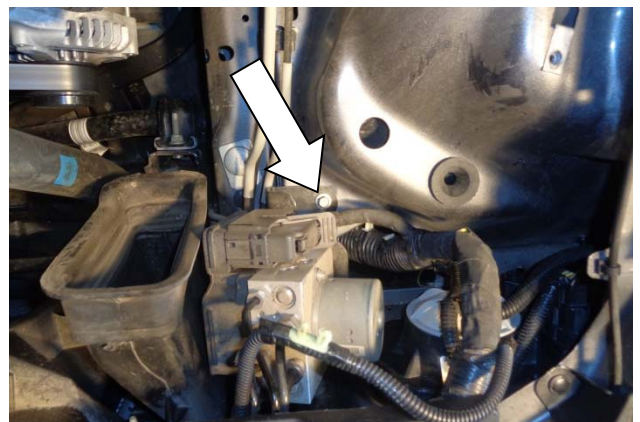
9. Loosen the hose clamp securing the intake duct to the throttle body, and remove the duct from the throttle body.



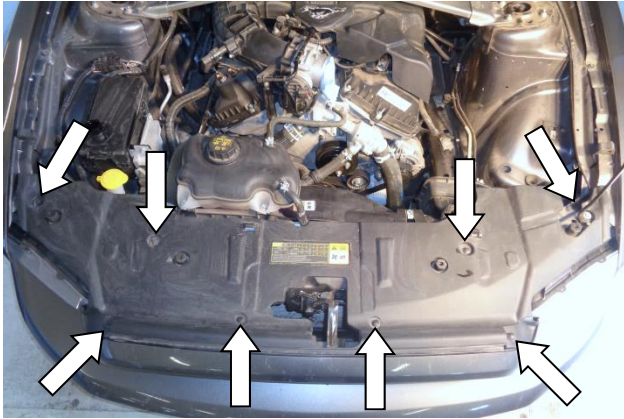
10. Remove the assembled airbox and duct from the vehicle.



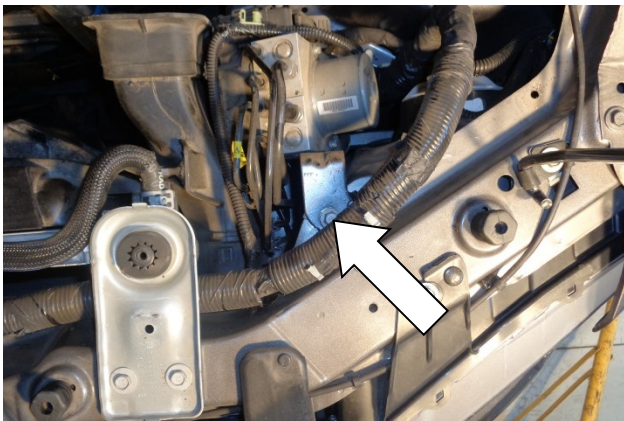
11. Remove the MAF sensor from the airbox, then remove the stock gasket from the sensor.
CAUTION: The sensor is delicate! Handle it with care, and store it in a safe location until reinstallation.



12. Remove and retain the lower mount bolt.



13. Use a flat-tip screwdriver to release the eight radiator support cover fasteners at the locations shown. Remove the fasteners entirely (both heads and sleeves), then remove the cover.

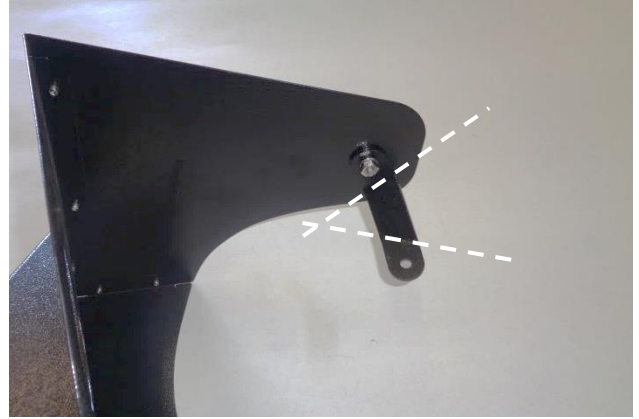


14. Remove and retain the upper mount bolt (hidden behind the cable bundle).

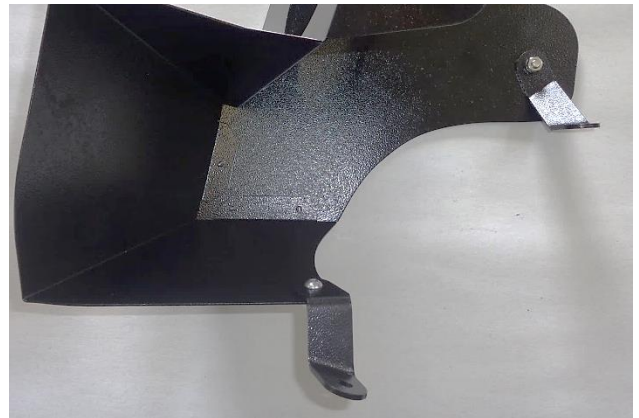
ASSEMBLE AND INSTALL YOUR FLOWMASTER COLD AIR INTAKE SYSTEM:



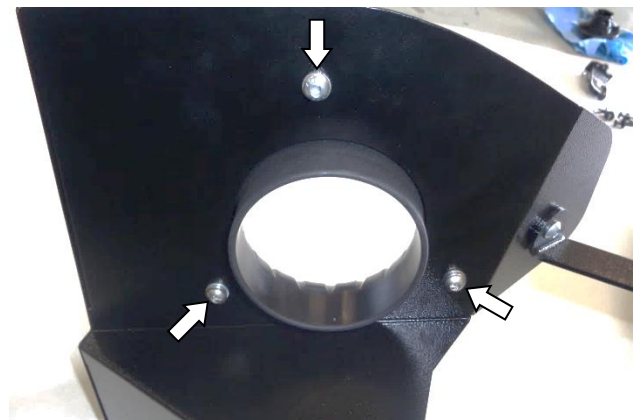
15. Attach bracket (10) to heat shield (25) using $\frac{1}{4}$ -20 \times $\frac{5}{8}$ " screw (9) (against bracket) and flat washer (7), lock washer (5) and nut (6) (against heat shield).



16. Attach bracket (4) to heat shield using $\frac{1}{4}$ -20 \times $\frac{5}{8}$ " screw (9) and flat washer (7) (against heat shield), and lock washer (5) and nut (6) (against bracket). Note orientation of bracket bend lines.



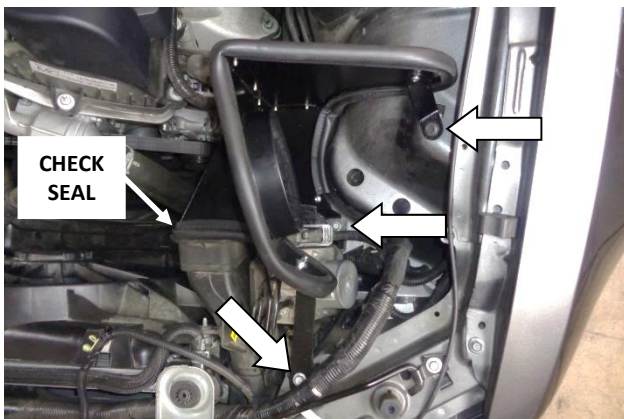
17. Attach bracket (8) to heat shield using $\frac{1}{4}$ -20 \times $\frac{5}{8}$ " screw (9) (against bracket), and flat washer (7), lock washer (5) and nut (6) (against heat shield).



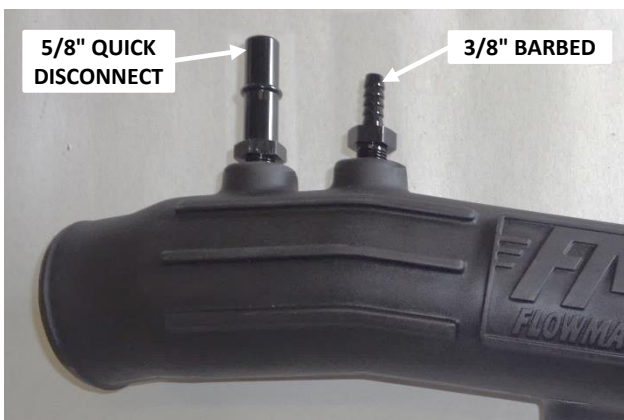
18. Assemble air filter adapter (3) to heat shield using M6 screws (22), lock washers (11) and flat washers (23).



19. Attach the gasket (24) to the heat shield. Starting on either side of bracket (8), gradually work around the heat shield, firmly pressing the seal onto the edge. When you return to the bracket, trim seal to fit using metal-cutting shears.



20. Install heat shield in vehicle, securing the brackets with the factory bolts removed earlier. If necessary, adjust alignment of the brackets, then retighten their fasteners. Verify even contact between heat shield gasket and lip seal on stock air duct.



21. Determine which vacuum fitting(s) are required for your vehicle's configuration. The 5/8" quick disconnect fitting (18) mates with the PCV hose latching connector. The 3/8" barbed fitting (19) mates with the EVAP system hose.



22. Your vehicle may require one or both vacuum fittings. If it uses only one fitting, the 1/4" plug (20) will be used in the unused port. Apply 2 wraps of nylon thread tape to threads of the required hardware, and install them in intake tube (15), in the appropriate ports.



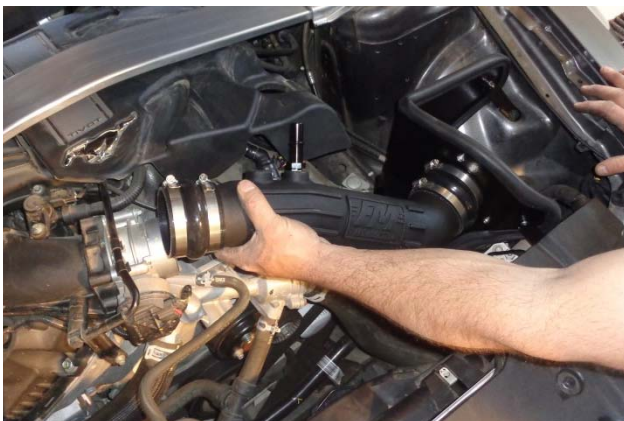
23. Install two small hose clamps (16) on small flex coupler (17), and install coupler on discharge end of intake tube. Only snug the clamps at this time, to allow adjustment when tube is installed.



24. Install two large hose clamps (21) on large flex coupler (12), and install coupler on intake end of intake tube. Only snug the clamps at this time, to allow adjustment when tube is installed.



25. Slip the MAF sensor gasket (14) over the sensor, ensuring correct orientation. Then install the sensor in intake tube, using M4 screws (13).



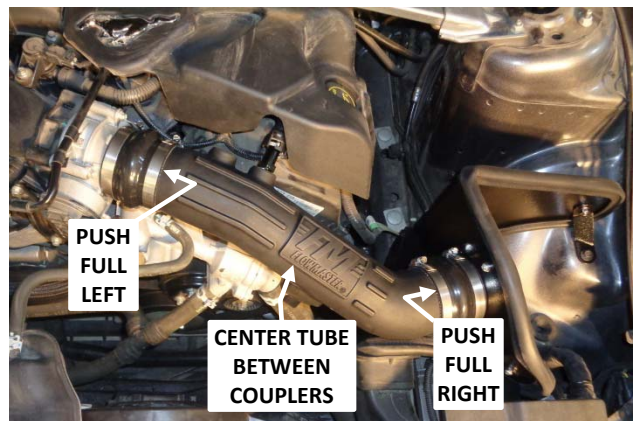
26. It is recommended that the assembled intake tube be installed as follows. First, install the right coupler on the filter adapter.



27. Then connect the vacuum hose(s) to their respective fitting(s).



28. Install the left coupler on the throttle body.



29. Push the left coupler up against the raised stop on the throttle body. Push the right coupler up against the heat shield. Then center the intake tube between the couplers, and tighten all hose clamps.



30. If your vehicle has a latching PCV fitting, secure it by pushing the latch to the right until it clicks.



31. Install clamp (2) on air filter (1), then install filter on filter adapter and tighten clamp.



32. Plug the MAF sensor lead into the sensor, push the latch in, and verify the connector is secure.



33. Secure the loose MAF sensor lead away from any moving parts, using the factory clip or cable ties.



34. If your vehicle includes the optional engine cover, remove the oil fill cap, reinstall the fill cap extension (removed at Step 4), then reinstall the fill cap.



35. Reinstall the radiator support cover and secure with the 6 fasteners (removed at Step 13).

FLOWMASTER CARB EO #
THE PERFORMANCE TECHNOLOGY COMPANY™

DELTA FORCE PERFORMANCE INTAKE

D-698-5

FLOWMASTER INC. • 866-464-6553
 1801 RUSSELLVILLE ROAD, BOWLING GREEN, KY 42101

36. Affix the CARB Exemption Order label to a clean, readily-visible location under the hood (e.g., near the hood latch), so an inspector can easily see it at emissions testing.



Congratulations, the installation of your FLOWMASTER cold air intake kit is now complete!

VECI LABEL NOTE

California emissions law requires the Vehicle Emission Control Information (or VECI) label to be readily-visible in the engine compartment.

If your VECI label is affixed to the stock airbox, a replacement label must be obtained and affixed to a suitable location in the engine compartment.

Replacement VECI labels can be ordered from the dealership by VIN number. The VECI label should be affixed somewhere that is NOT easily removed from the vehicle.

NOTE: A missing VECI label may result in failure of the vehicle's emissions test.

