

Ford TFI Adapter Harness

PN 558-305

NOTE: It is highly advised to use firmware versions 355 and higher when using a Ford TFI distributor. Download from www.holley.com or contact Holley Tech Service at 270-781-9741.

The following wiring diagrams show how to wire a Ford TFI distributor with and without a CD ignition box. Note that the system is designed only for distributors used for sequentially injected Ford engines such as 5.0L Mustangs. A very small amount of TFI style distributors around 1985 did not have a cam sync ident in the pickup. This adapter plugs into the 10 pin ignition adapter on the main harness, and plugs into the distributor. The only wiring that must be performed is proper attachment of the white wire.

HOLLEY EFI TO FORD TFI IGNITION (SEQUENTIAL) - USING FORD COMPUTER-CONTROLLED DISTRIBUTOR, TFI MODULE (ECU CONTROLLING IGNITION TIMING)

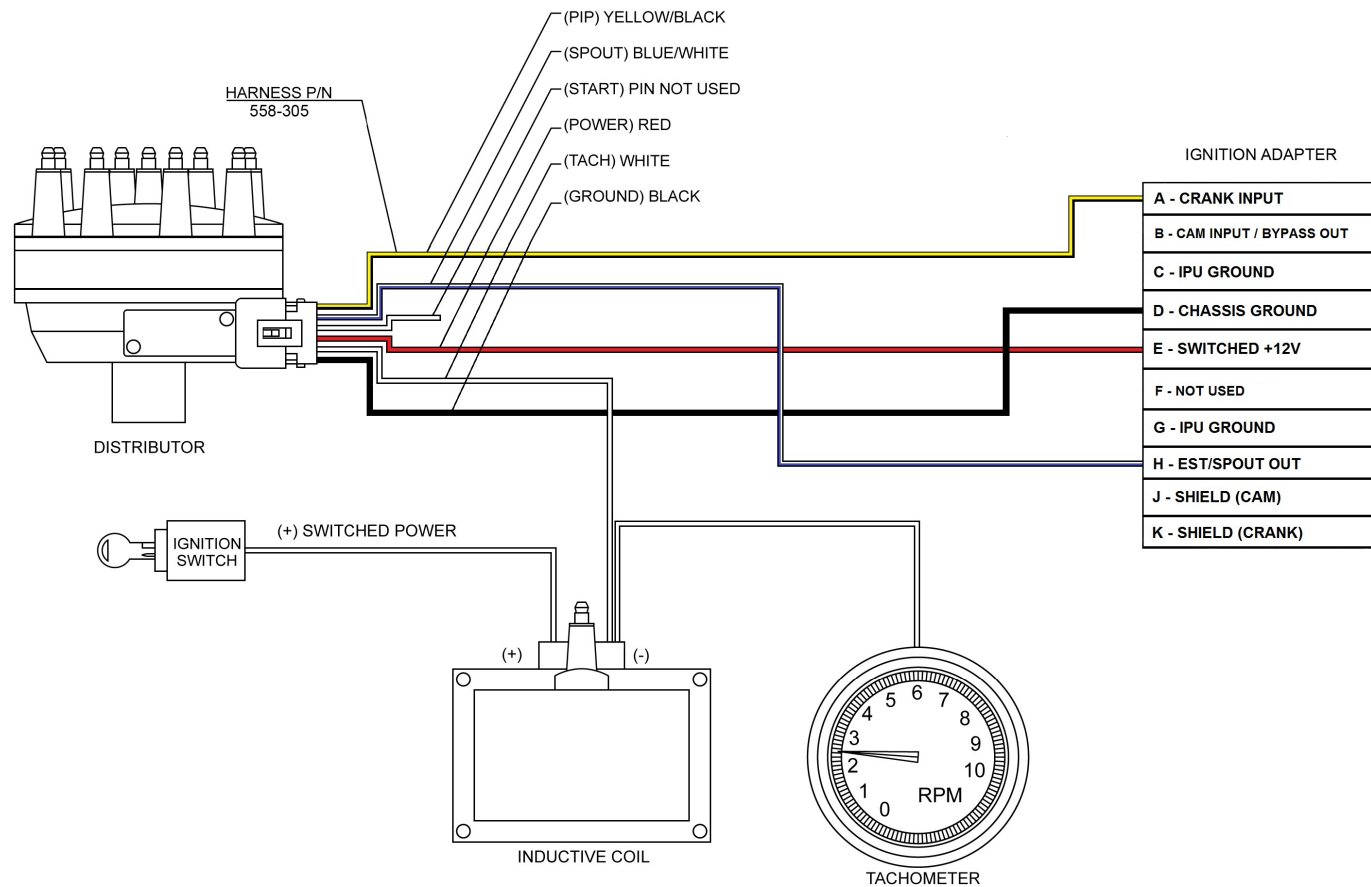


Figure 1

**HOLLEY EFI TO AFTERMARKET IGNITION - USING FORD COMPUTER-CONTROLLED
TFI DISTRIBUTOR (SEQUENTIAL), TFI MODULE (ECU CONTROLLING IGNITION TIMING)**

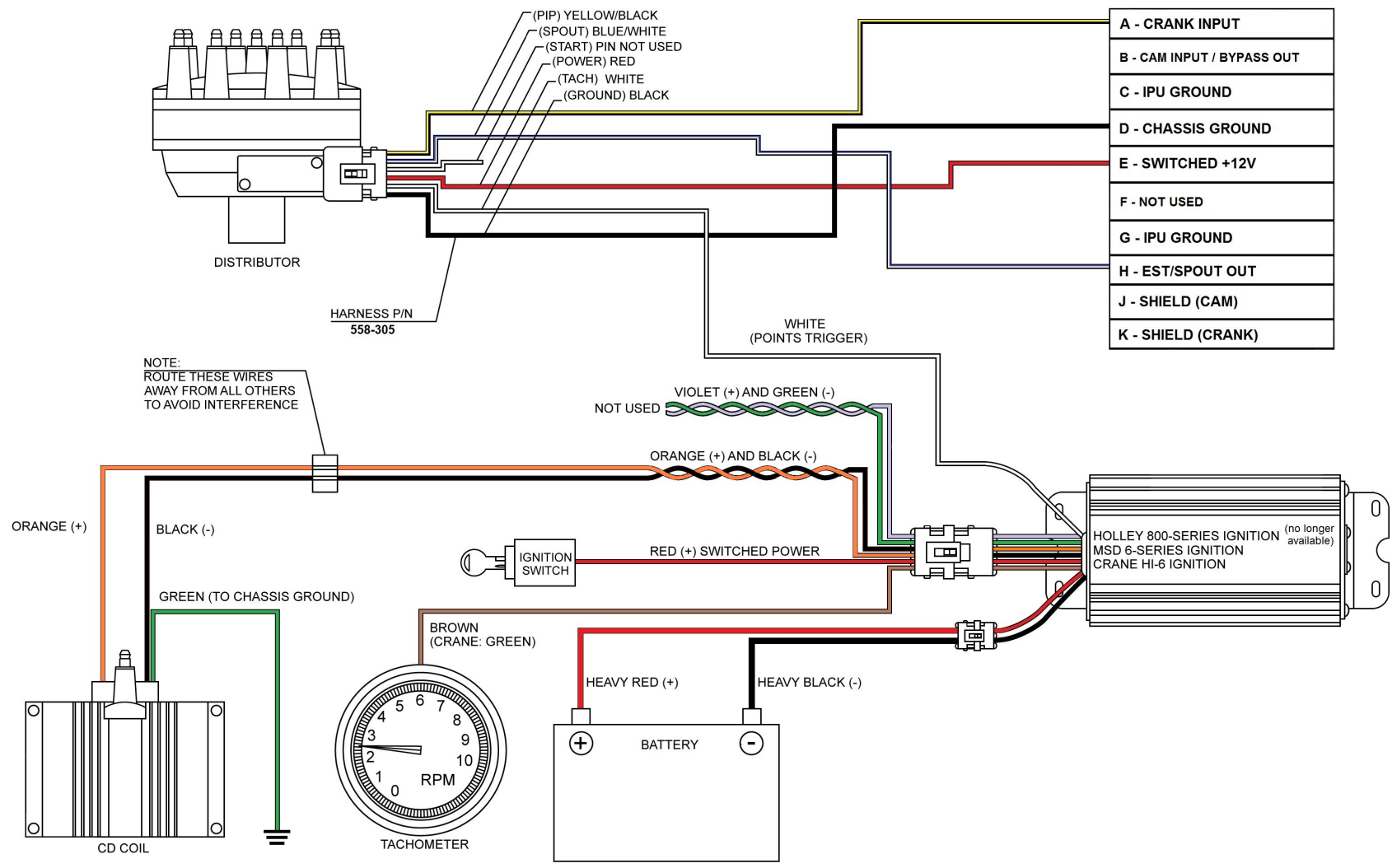


Figure 2